



# KENDALL COUNTY HEALTH DEPARTMENT



2016

## Annual Report

*The mission of the Kendall County Health Department is to promote physical health, mental health, environmental health, protect the community's health, prevent disease, and promote family economic self-sufficiency through both person based services and population based programs.*



# EXECUTIVE DIRECTOR MESSAGE

Precious Community Members,

Thank you for taking the time to open our Annual Report. Inside this report you will find informatics and narrative descriptions that reflect upon some of the diverse programs we offer to our community. For those of you, who may also be interested in a behind the scenes view of our Health Department, we would be honored for you to also open the Kendall County Health Department 2021 Strategic Plan. While the Annual Report emphasizes the delivery of program, the Strategic Plan works to ensure a quality organization with appropriate infrastructure to carry out sustainable, high quality programs throughout our community. The Kendall County Health Department Board of Health initiated its strategic planning process in January 2016 through February of 2017 with the final adoption of Strategic Plan 2021. We are deeply appreciative of the several department staff and community partners that contributed thoughtfully to the final details of the plan:

#### Strategic Plan Process Elements:

- ★Why we Plan Dialogue
- ★People Might not Know...
- ★Communicate What we Do...
- ★Stakeholder Interrelatedness
- ★Mission and Vision Review
- ★Branding and Logo Review
- ★Assessing Environment
- ★Identification of Priorities
- ★Implement and Monitor

#### Integrated Plans:

- ★Accessibility Plan
- ★All Hazards
- ★Community Action
- ★Community Health
- ★Cultural Equity
- ★Executive Succession
- ★Performance Management
- ★Risk Management
- ★Solid Waste
- ★Workforce Development

#### Focused Strategic Priorities:

- ★Community Communication
- ★Fund diversification
- ★Stakeholder Interrelatedness
- ★Workforce Development

Link to [Strategic Plan](#)

Peace,



**Amaal V.E. Tokars**  
**Executive Director/Public Health Administrator**



# BOARD OF HEALTH

Kendall County Health Department is led by a volunteer Board of Health who selflessly gives of their time and expertise in providing leadership and direction for KCHD. The Board of Health represents a high level of dedication and professionalism in the development and advancement of KCHD policy, promoting quality services in behavioral health, community health, environmental health and community action services. The Board of Health commits their time and energy in policy making, discussion of services and working with stakeholders in Kendall County.



## KENDALL COUNTY HEALTH DEPARTMENT BOARD OF HEALTH 50<sup>TH</sup> ANNIVERSARY RESOLUTION STATEMENT OF APPRECIATION

**BE IT REMEMBERED**, at a regular meeting of the Kendall County Health Department Governance, held on the 20th day of September 2016, the following Resolution was adopted:

**WHEREAS**, the accredited and nationally-recognized Kendall County Health Department celebrates 50 years of dedicated community service; and

**WHEREAS**, these services are reflected in the dedicated staff/volunteers working in the diverse sectors of community action, behavioral health, environmental health, community health, emergency preparedness, and program support; and

**WHEREAS**, the Health Department has been recognized for fostering "a sense of respect for clients and employees"; and

**WHEREAS**, "the Kendall County Health Department is seen as collaborative, innovative, approachable, and transparent by those who work closely with the organization"; and

**WHEREAS**, "the organization is commended for its efforts in thoroughly assessing the needs of its community and responding proactively as evidenced by its community health assessment and strategic plan"; and

**WHEREAS**, "the Health Department has a dedicated, hardworking, competent executive leadership team that provides vision and strategic planning while fulfilling multiple roles to support the work of the organization"; and

**WHEREAS**, the staff/volunteers of the organization strive "to provide culturally competent services to an increasingly diverse community" and the Board of Health wishes to express humble gratitude for such caring dedication to community members;

**NOW THEREFORE BE IT RESOLVED** that the Kendall County Board of Health officially expresses deep appreciation for past and present staff as well as volunteers on this 50th Anniversary year and wishes continued success for services worthy of every precious person served.

**DONE IN OPEN SESSION** this the 20th day of September, 2016.

A handwritten signature in cursive script that reads "Christina Cooper". The signature is written in black ink and is positioned above a horizontal line.

Christina Cooper  
Board of Health President

**PRESIDENT**  
Christina Cooper

**VICE PRESIDENT**  
Joseph Gruber, III, D.D.S.

**SECRETARY**  
Brenda Ulrich

**MEMBERS**  
Jeff Wehrli  
John Palmer, M.D.  
Jim Friedrich  
Jim Jensen

# PROFESSIONAL STAFF

## PROGRAM SUPPORT/OPERATIONS

Amaal Tokars, Ed.D, Executive Director/Public Health Administrator

RaeAnn VanGundy, M.P.H., Operations Administrator

Steve Curatti, M.P.A., L.E.H.P., Program Administrator

Becki Rudolph, Executive Assistant

Katy Williams, B.S., Grants/Information Coordinator

Victoria Rafatcz, Fiscal Specialist

Kathy Lewis, Data Entry/Billing Specialist

## COMMUNITY HEALTH SERVICES

Terri Olson, B.S.N., R.N., Director

Kelly Jordan-Licht, B.S.N., R.N., Assistant Director

Mary McCarron-McGinniss, R.D., L.D.N., C.L.C., WIC Coordinator

Brandy Lehman, B.S., R.N., Public Health Nurse

Vivian Ndangoh, R.N., M.S.W., Public Health Nurse

Carly Smitherman, M.S., Nutritionist/Case Manager

Cindy Kathe, L.D.N., Nutritionist

Nancy Villa, Administrative Assistant

Sandy Cortez, A.S., Community Health Specialist

Erica Licea, WIC Specialist

Cruz Llamas, WIC Specialist

## ENVIRONMENTAL HEALTH SERVICES

Aaron Rybski, B.S., L.E.H.P., Director

Todd Drefcinski, B.S., L.E.H.P., Assistant Director

Amy Serby, B.S., L.E.H.P., Sanitarian

Lauren Bellville, B.S. Associate Sanitarian

Adam Johnson, B.S., Associate Sanitarian

Ashley Hunt, B.S., Associate Sanitarian

Jodi Wulff, B.A., Administrative Assistant

## COMMUNITY ACTION SERVICES

Diane Alford, B.S., Director

Melissa Creamer, M.A., Assistant Director

Chung Saenz, Administrative Assistant

Kathy Chronister, Coordinator-Grundy Office

Vicky Torgerson, B.S., Weatherization Coordinator

Sandra Lambert, Community Action Advocate

Norma Maisonet, Energy Conservation Tech

Kim Kleinprinz, Energy Conservation Tech

Dan Misener II, Energy Conservation Tech

## MENTAL HEALTH SERVICES/SUPPORT SERVICES

Jason Andrade, M.S., Ed., L.C.P.C., Director

Michelle Hawley, M.P.A, C.R.A.D.C., MISA I, Assistant Director

Billy Ray Williams, M.S.W., C.A.D.C., Mental Health Clinician

Rose Romero, M.S., L.C.P.C., Mental Health Clinician

Jan Smallwood, M.S., L.C.P.C., Mental Health Clinician

Cindy Vey, M.S., L.C.P.C., C.A.D.C., Mental Health Clinician

Brittany Johnson, M.S. L.C.S.W., Mental Health Clinician

Joe Oleck, M.S.W., Care Coordinator

Keith Bielema, B.A., Transitions Coordinator

Rhonda Matlock, Admissions Coordinator

Evelyn Hull, M.S., L.C.P.C., Admissions Counselor

Kerri Fuentes, Administrative Assistant

Christina Villegas, Support Staff

Arissa Wallis, B.A., Support Staff

Sharon Samuel, Support Staff

Kim Essling, Support Staff

## INDEPENDENT CONTRACTORS

Jayne Ballun, M.S., M.P.H., Emergency Response Coordinator

Marlin Hartman, B.A., Solid Waste Coordinator

Sandeep N. Gaonkar, M.D., Psychiatrist, Mental Health Medical Director (Conventions Psychiatry & Counseling)

Joseph M. Nemeth III, M.D., Psychiatrist (Child & Adolescent)

Lorna London, Ph.D, Clinical Psychologist

## INVALUABLE VOLUNTEERS

Sam Tessitore, Community Action Services

Karen Cotter, L.C.P.C., Mental Health Services

Carol Hernandez, Community Health Services

## INTERN PROGRAMS IN COLLABORATION WITH THE FOLLOWING UNIVERSITIES

Northern Illinois University

Benedictine University

University of Illinois Chicago

University of St. Francis

Roosevelt University National Louis University

Illinois State University

Lewis University

Adler School of Professional Psychology

Aurora University/George Williams School of Social Work



# ADVISORY BOARD PARTNERS

## COMMUNITY ACTION ADVISORY BOARD

(TRIPARTITE ADVISORY BOARD)

Jane Swinney, Chair  
Kathy Braden, Vice-Chair  
Richard Joyce  
Jocelyn Retz  
Janet Goehst

Arnetta Dean  
Jim Homa  
Ken Miller  
Rev. Kim Hulen  
Kimburly Ann Montano

Eric Fisher  
Don Hansen  
Chad Lockman  
Mireya Martin  
Jim Ryan

## COMMUNITY HEALTH ADVISORY BOARD

Beckie Frieders, Chair  
Larry Stefanski, Vice-chair  
Laura Barr  
Rachel Rosenwinkel  
Donna Palmer

Melanie Eilers  
Maribeth Surma  
Jennie Perry  
Stephanie Wayne  
Kerstin Villalobos

Patrick Knapp  
Lorraine Beasley  
Terese Raabe

## ENVIRONMENTAL HEALTH ADVISORY BOARD

Dan Reedy, Chair  
John Church, Vice Chair  
Ted McCannon  
Wes Morris  
Valerie Burd

Megan Andrews  
Evelyn Givens  
Cliff Thrall  
Ron Cooper  
Gary Flentge

Jackie Forbes  
Dan Larsen  
Brad Schmidt

## MENTAL HEALTH ADVISORY BOARD

Cathi Mundsinger, Chair  
Deanna Cross, Vice Chair  
Chris Cooper  
Shirley Anne Briggs  
Rosie Carbajal-Romo

Brian Jahp  
LuAnne Peters  
Judge Stephen Krentz  
Dina Schnable  
Ann Volpentesta

Rosie Carbajal-Romo  
Mariann Benda  
Randy Book  
Gregg Wehrs



# FINANCIAL REPORT

## DECEMBER 1, 2015 – NOVEMBER 30, 2016

REVENUE:	EXPENDITURE:
<p><b>Levy &amp; General Revenues</b></p> <p>Operational Reserve \$80,000 (a)</p> <p>Public Health Property Tax Levy 754,942</p> <p>Interest Income 3,863</p> <p>Miscellaneous Income 39,781</p> <p>Coffee Revenue 555</p> <p>State Grant Health Protection 63,201</p> <p><b>Total Levy &amp; General Revenues 942,342</b></p> <p><b>Mental Health Services</b></p> <p>Mental Health Counsel Fees 98,763</p> <p>708 Mental Health Grant 801,900</p> <p>Mental Health Grants 103,575 (b)</p> <p>Senior Citizens Fund Transfer 59,178</p> <p>Fox Valley United Way 21,150</p> <p>Title III NEIAA Grant on Aging 11,461</p> <p>State Grant Tobacco 36,998</p> <p>DCFS Counseling 2,925</p> <p><b>Total Mental Health Services 1,135,950</b></p> <p><b>Environmental Health Services</b></p> <p>Septic Inspection Fees 16,525</p> <p>Restaurant Inspection Fees 195,980</p> <p>Tanning Fees 2100</p> <p>Kendall Co. Well Permit Fee 16,900</p> <p>Climate Change 13,500</p> <p>Solid Waste Fee 1,275</p> <p>West Nile Virus Grant 28,323</p> <p>Non-Community Well Grant 1,575</p> <p>Radon Grant 17,487</p> <p><b>Total Environmental Health Services 293,665</b></p> <p><b>Community Health Services</b></p> <p>Immunization Clinic 4,187</p> <p>Adult/Travel Clinic 18,860</p> <p>State Family Case Mgmt. (FCM) 74,563</p> <p>Public Aid FCM 22,669</p> <p>Public Aid Immunizations 10,631</p> <p>Women, Infant &amp; Children (WIC) 131,095</p> <p>TB Board Contract 12,022</p> <p>Flu Clinic 1,475</p> <p><b>Total Community Health Services 275,502</b></p> <p><b>Community Action Services</b></p> <p>Community Action Grants 1,766,033 (c)</p> <p><b>Total Community Action Services 1,766,033</b></p> <p><b>Emergency Response</b></p> <p>Emergency Response Grants 177,768</p> <p><b>Total Emergency Response 177,768</b></p> <p><b>Total Revenues \$4,591,260</b></p>	<p><b>Personnel</b></p> <p>Program Support \$567,203</p> <p>Community Action Services 364,014</p> <p>Mental Health Services 630,696</p> <p>Community Health Services 447,995</p> <p>Environmental Health Services 360,810</p> <p><b>Total Personnel 2,370,718</b></p> <p><b>Contractual &amp; Client Assistance</b></p> <p>Dues/Subscriptions 11,454</p> <p>Conferences &amp; Training 17,664</p> <p>Contractual Services 173,445</p> <p>Printing &amp; Publications 5,848</p> <p>Telephone 5,697</p> <p>Advertising – Other 7,090</p> <p>Direct Client Assistance 1,578,478</p> <p><b>Total Contractual/Client Assistance 1,799,676</b></p> <p><b>Other</b></p> <p>Postage 4,096</p> <p>Mileage 13,780</p> <p>Non-Medical Supplies 41,937</p> <p>Medical Supplies 2,943</p> <p>Vehicle Maintenance 1,015</p> <p>Refunds 17,976</p> <p>Rent to County Board 145,814</p> <p>Contribution Demand from County Board 125,000</p> <p>IPLAN / CARF/ PHAB 17,205</p> <p>Adult/Travel Clinic Vaccine 12,288</p> <p>Miscellaneous Expense 2,270</p> <p>Psychological Testing Materials 99</p> <p>Solid Waste 1,000</p> <p><b>Total Other 385,423</b></p> <p><b>Capital Expenditures</b></p> <p>Capital Expenditures 27,389</p> <p><b>Total Capital 27,389</b></p> <p><b>Total Expenditures \$4,583,206</b></p> <p><b>Revenues over Expenditures \$8,054</b></p>

(a)Operational Reserve is dedicated to the operational sustainability of health and human services.

(b)Includes \$51,976 for DASA-Public Aid, \$48,049 DASA State Grant and several other small grants.

(c)Includes \$1,256,123 for energy assistance, \$246,214 for home weatherization, \$255,664 client assistance, and \$8,032 for homeless prevention assistance.

*Funding provided by Department of Commerce & Economic Opportunity, Illinois Department of Health Care & Family Services, Department of Alcohol & Substance Abuse, Fox Valley United Way, Illinois Department of Human Services, Illinois Department of Public Health, Northern Illinois Area Agency on Aging, 708 Mental Health Board and local property tax levies set by the Kendall County Board.*

# Financial Summary 2016

## Revenues



State Grant Dollars= 34%  
Federal Grant Dollars= 21%  
County Board Appropriations = 18%



708 Mental Health Dollars = 18%



Fee for Service Income= 9%



Operational Reserve= 2%

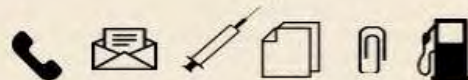
## Expenditures



Population/Person-based Services = 52%



Special Family Assistance = 34%



Commodities/Tools = 8%



Contribution/Rent to County Board = 6%



# COMMUNITY ACTION SERVICES

## TOOLS FOR SUCCESS

WE KNOW WHEN FAMILIES ARE PROVIDED THE RIGHT PATTERN, TOOLS, SUPPORT, ADVOCACY, AND INFORMATION TO TURN THEIR LIVES AROUND THEY WILL SUCCEED

We believe everyone deserves a *safe* place to call home. We believe every *child* deserves a Head Start. We believe every *youth* has something to offer. We believe every family has the *power* to be self-sufficient. We believe nobody should go to bed *hungry*. We believe everyone should be *warm* at night. We believe in *empowering* people to help themselves. We believe we are responsible for providing the highest level of *service* to our customers. We believe in *adapting* to the community's needs. We believe in striving to achieve *positive*, long-lasting results. We believe in setting ambitious goals and evaluating our *achievements*. We believe in *creativity* and innovation. We believe in the strength of our customers to achieve greater *stability*. We believe every life has *value*. We believe our grandparents and your grandparents should be able to remain at *home* as long as safely possible. We believe that lack of affordable transportation should not be a barrier to individual *independence*. We believe in providing a comprehensive, *life changing* service delivery. We believe we will put ourselves out of *business* someday. We believe in the *power* of community. We believe in the *talent* of our staff. We believe we can *build* a better community.

The **Community Service Block Grant** is the heart and soul of the nationwide network of over 1,100 Community Action Agencies. The grant funds are used to develop, coordinate, and deliver comprehensive programs and services designed to meet specific local needs. The following are programs that were provided to qualified households in 2016:

- ★ Employment: 13 Individuals received short-term financial assistance to enable them to secure permanent employment - \$15,176
- ★ Education: 5 eligible students were able to pursue post-secondary education. The funding removed financial barriers such as tuition, fees, and other related expenses – \$7,000
- ★ Drive to Success - 26 Individuals received financial assistance to maintain employment for auto repairs, title, insurance, etc. - \$15,000
- ★ Special Disaster Relief Funding for Coal City: 115 Coal City Families received emergency financial assistance after the June 2015 tornado - \$63,000
- ★ Emergency Services: 124 Families received assistance through crisis situation including: counseling, referrals, provision of food, shelter, rent, utilities, etc. - \$18,661
- ★ Helping Hand for School: 12 Families the goal of this program is to help children become successful in school - \$1,108
- ★ A total of \$119,945 was used to assist residents of Kendall and Grundy Counties.



### ILLINOIS LOW INCOME HOME ENERGY ASSISTANCE PROGRAM (LIHEAP)

LIHEAP is designed to assist eligible low income households pay for winter energy services. LIHEAP will provide a one-time benefit to eligible households to be used for energy bills. The amount of payment is determined by income, household size, fuel type, and geographic location. LIHEAP also provides one-time reconnection assistance for households whose utility service has been disconnected for non-payment.

### WEATHERIZATION

The Illinois Home Weatherization Assistance Program provides cost-saving energy service to qualified customers. Services offered through the Weatherization program include, but are not limited to: air sealing, insulation of attics, walls, crawlspaces, or foundations; repair or replacement of doors and windows; cleaning, tuning, repair or replacement of furnaces.



**Drive-To-Success** assisted a single, 55 year old female, Air Force Veteran to stay working. She needed a vehicle to keep her Substitute Teaching position she has held in a Kendall Co. School District for past 8 years. Christmas break was just starting and needed another vehicle before school resumed in January. A very nice one-owner 2005 Mercury Montego was donated - 123,000 miles, all leather, sunroof, new tires and battery. The vehicle was checked-out mechanically and oil changed. We were able to assist with the following expenses: renew her insurance for six months, oil change, Tax/ Title/Plates. **A total of \$710.83.** Happily, our client was able to return to her employment as school break resumed.



---

## NOTES OF THANKS

---

*Dear Dan and Kendall-Grundy Community Action.  
Words cannot express how grateful I am for your monetary assistance with my mortgage I so appreciate your support. Our Counties have wonderful, caring and compassionate people and I am honored to be a part of them. Please know this money will be helping out a lot my family and me thank you from the bottom of our hearts.*

*There not enough words to cover the gift of the cars. I am still in shock. My son told me not to give up, somehow it would work out. It's perfect for me & such a wonderful car. Please know I really am so grateful & blessed. Thank you!*

# COMMUNITY HEALTH SERVICES

## **TUBERCULOSIS (TB) CASE MANAGEMENT/CLINIC**

Our nurses offer education and counseling on both Latent and Active TB. It is required to report and treat only Active TB cases, but treatment is suggested for both. Through the rigorous management of both Active and Latent cases we are able to coordinate care with our partners, both Local and State, to provide and meet our client's needs. We provide Direct Observation Therapy (prescribed medications and respiratory isolation as needed) following state regulations. In 2016, we had 3 active known cases in and 15 known latent cases. Our clinical nurses also support a Tuberculosis Clinic, which supplied 210 TB tests to 171 individuals.

Educational outreach was provided to many of our school districts:

- ✓ Yorkville High School
  - ✓ Plano Back to School Bash
  - ✓ St. Luke's, Boulder Hill School Fair
- and other community partners such as:
- ✓ YMCA
  - ✓ WSPY

This outreach assisted with Community Health Education targeting:

- ✓ Immunizations
- ✓ Sexually Transmitted Diseases
- ✓ Food borne Illnesses
- ✓ Specific Health Issues:
  - Asthma
  - Elevated Blood Pressure
  - Diabetes, Obesity, Rabies
  - Travel shots

Professional seminars were provided to assist our colleagues in private medical practice to develop strong Tuberculosis (TB) policy and procedures. We also provided guidance on re-emerging infections such as Measles, Mumps, and Whooping Cough. Education was also provided on new emerging infections to Illinois such as Zika and Dengue.

*Over 420 cases of infectious diseases were reported to Illinois Department of Public Health*

## **IMMUNIZATION PROGRAM**

The immunization program provided 820 vaccines to 259 infants and children through the Vaccine for Children's Program and 302 vaccines to 206 adults.

## **TRAVEL CLINIC**

This clinic provides shots needed for travel outside of the United States, available upon request. Through access on our web page at Kendall County Health Department, individuals can complete an inquiry on their choice of destination and our clinician will review and call the individual back with needed immunizations and other pertinent information. We

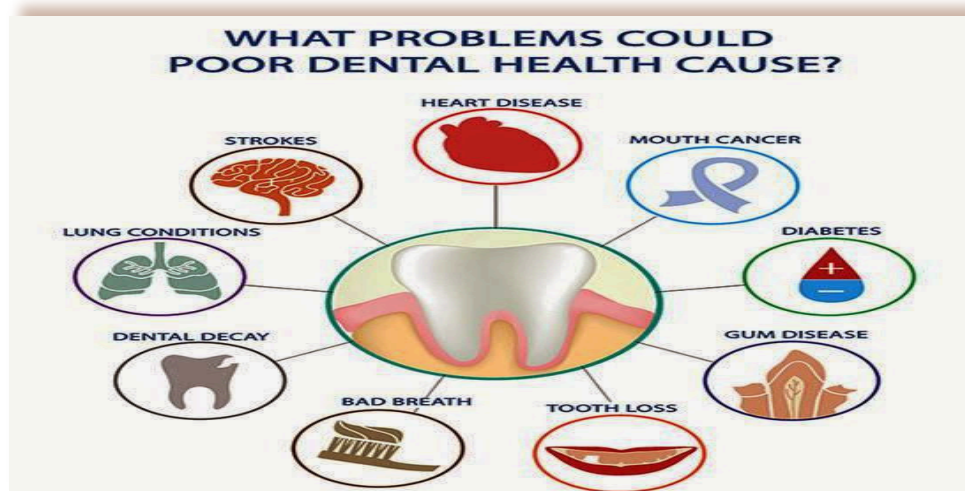
## **EMERGENCY PREPAREDNESS**

In June of 2016, Kendall County and Grundy County held a Full Scale Exercise with a scenario based on a release of Anthrax. The exercise demonstrated Kendall County Health Department's ability to respond to any public health emergency, especially the administration of prophylaxis, when necessary. Several volunteers assisted by participating in the process and the exercise was successful and assistive in securing a plan if a true emergency were to take place.




## IMPROVING ORAL HEALTH CARE

The Kendall County Health Department's Community Health Services is committed to protecting the community's health and well-being, inspiring healthy lifestyle choices and preventing disease, including oral health. By promoting and assisting individuals to maintain their good oral health, and hopes to prevent a number of chronic diseases known to be associated with poor oral health.



KCHD is working toward implementing both direct client services and population based interventions in an effort to increase community population's opportunities for accessible and affordable oral health care for the residents of Kendall County.



### STRATEGIES: IN PROGRESS

-  Work on strong coalitions between community health and well-being boards, local authorities, state authorities, dental groups, hospitals, nursing homes, daycares and schools.
-  Acquiring materials and equipment for a dental clinic.
-  Improve informative outreach to the community to ensure that those without dental care have some form of access to appropriate urgent/emergency dental services.

### STRATEGIES: IN PLANNING

-  Advance Kendall County Community's knowledge on ways in which to achieve and maintain good oral health through educational presentations on good oral health habits and provide web-accessible information linking them to oral health care and oral hygiene education which includes tools and support aimed at promoting enrollment in dental insurance.
-  Open an adult oral health clinic for ages 18-65 years' old that are uninsured.

# 2016 – 2021 IPLAN

September 2016, the Kendall County Health Department commenced with the implementation of a new five-year community health improvement plan, also referred to as IPLAN. The **2016-2021 IPLAN** serves to educate, motivate, inspire and empower our valued community members and families to pursue and maintain healthy lifestyle choices. This will be achieved by offering our community optimal opportunities for access to health care and well-being, while inspiring them to actively pursue and maintain healthy lifestyle choices and social well-being positively contributing to a common good and growing community spirit.

The 2016-2021 IPLAN is rooted in three thoughtfully selected health priorities representing health and well-being initiatives unduplicated in our current public health system and distinctive by innovation from efforts yet established in the local public health system. Originally selected through a participatory community engagement process, these three health priorities are diverse and reflect community-driven health needs. Also selected through community consensus, the three health priorities targeted are:

- ★ *Increase community population opportunities for access to oral health care*
- ★ *Decrease community population potential exposure to Lyme Disease*
- ★ *Connect seniors to assets that reduce socio-economic duress and support mental health*

What follows are thoughtfully crafted objectives intended to “move the needle” on each of our valued priorities.

## **INCREASE COMMUNITY POPULATION OPPORTUNITIES FOR ACCESS TO ORAL HEALTH**

Kendall County Health Department, by 2021, will endeavor to approach 100% of Kendall County dental offices and health centers to promote engagement in increasing access to oral health care for Kendall County’s uninsured adult population and/or co-create participatory access to good oral health for the county’s population. Additionally:

- ★ Will establish and offer an on-site dental clinic serving community adults lacking insurance
- ★ Advance the Kendall County community’s knowledge of ways in which to achieve and maintain good oral health by providing at least two annual educational presentations on good dental health habits to school-age children
- ★ Serve the Kendall County community with web-accessible information linking them to oral health care and oral hygiene education which includes tools and support aimed at promoting enrollment in dental insurance



### **DECREASE COMMUNITY POPULATION POTENTIAL EXPOSURE TO LYME DISEASE**

KCHD will endeavor to decrease Kendall County residents' exposure to Lyme Disease by utilizing an awareness program to increase exposure-prevention behavior by 50% through five years utilizing a binary survey. Responses will be used to assess prevention-based behavior potential in county residents after presentation delivery. By 2012:

- ★50% of county participants will display potential preventive behavior after program presentation delivery
- ★Provide and promote tick and Lyme Disease information to the community. In doing so, up to four physician/veterinary clinics will be visited annually. During these visits, staff will distribute Lyme Disease awareness brochures and have brief discussion with our health providers, on the material
- ★A minimum of two community presentations will be presented to county residents annually
- ★A tick surveillance program will be developed with tick drags performed at three recreational sites per year; and population-based education and surveillance data will be updated at least annually, and made easily accessible to our community via a newly created tick webpage.

### **CONNECT SENIORS TO ASSETS THAT REDUCE SOCIO-ECONOMIC DURESS & SUPPORT MENTAL HEALTH**

KCHD, by 2021, will assess 100% of the seniors utilizing KCHD for their needs as related to mental health, substance abuse, social isolation, and/or financial instability.

- ★Additionally, a minimum of four presentations will be conducted annually to seniors, at local senior living facilities, senior centers, senior clubs and social gatherings, to raise awareness of and promote access to services, which address mental health, substance abuse, social isolation, and/or financial instability
- ★Engage a minimum of four local public health system partners annually, including health care providers, staff of senior living facilities and senior centers, to raise awareness of and promote access to the same
- ★Leverage the 24/7 accessibility of the internet (to include a webpage and corresponding social messaging, and the department's electronic newsletter) to prepare, promote and provide a senior-friendly community-wide resource for mental health and financial stability-related information and resources that may be informed in part by local public health system partners



# ENVIRONMENTAL HEALTH SERVICES

## ORDINANCE UPDATES

Health Department staff worked with various county colleagues, the Board of Health, the State's Attorney's office, Illinois Department of Public Health and the County Board on newly revised versions of its three core ordinances, retail food protection, private water supplies and private sewage disposal. All three ordinances needed quite a bit of work to bring them into line with new technologies and new state codes approved and implemented within the last several years.

The new Food Protection Ordinance in particular was developed with an eye towards the future with the newly adopted Illinois Food Code to be implemented in Kendall County at the end of 2017. Both this ordinance and this new code work in concert to provide necessary regulation of different aspects of the food service operation, all of which is intended to help ensure the safe and sanitary preparation and sale of foods.

## FOOD PROTECTION PROGRAM:

Over the course of the year, Environmental Health Services worked to create a Quality Assurance Procedure focused on work performed across the food protection program. This procedure formalizes process currently in play and creates new processes. Staff ensured that this procedure incorporated concepts and requirements of the Illinois Local Health Protection Grant, FDA Retail Food Standards and the new Illinois State Food Code and Kendall County Food Ordinance. This work also required the creation and revision of several other procedures, focusing on administrative action and facility risk typing.

Work to implement the new Illinois State Food Code is already underway with a target roll out date set at January 1, 2018. This new code looks at food safety differently, utilizing a new inspections process and a new scoring system. Work to acclimate inspection staff and industry to this will be the focus in the coming year.

The food program again experienced moderate growth for the second year in a row, adding an additional 12 permitted and inspected food service facilities during 2016, bringing the total over 440 facilities.

## WELL & SEPTIC PROGRAMS:

Staff continues to see a change in septic system types being permitted and installed with more alternative, smarter designs used on lots with compromised ability to utilize private sewage disposal. More dosing systems, aerobic treatment systems and systems using alternative technology were used in the development of both new lots and the repair of existing systems.

Some community residents are beginning to see wells at 500 to 600 feet going dry in several subdivisions throughout the county. More observation will take place in the coming years, but many drillers are already adjusting their depth estimates when looking at those areas. Staff has also continued to utilize our geographic information system and has now located approximately 1650 water wells across the county with global positioning system technology.

## PREVENTING LYME DISEASE

In 2016, Environmental Health Services worked to create a deer tick surveillance program and enhance our existing tick educational programs. Through the year, this division has accomplished this and more!



### SURVEILLANCE:

Up until this year, there had not been any formal tick surveillance performed in Kendall County. In fact, there is very little in all of northern Illinois. We worked with partners in Lake and DuPage Counties to build a tick drag and begin surveying local forest preserves where we collected and froze nine deer ticks.

We have worked to locate testing labs (and secure the funding) to test these locally collected ticks for the presence of Lyme Disease. This information will be used in our educational messages with our partners and the public in the future.

### Education:

Education and outreach has long been a priority for the Environmental Health Services Unit. Throughout the 2016, we educated hundreds of people from various demographics on the dangers of Lyme Disease and how to protect themselves.



In 2016, Environmental Health Services provided Lyme Disease/Tick educational presentations to/at the following groups and events:

- 🐛 Dickson Murst Farm Days (two events)
- 🐛 Natural Resources Tour (presentations over three days)
- 🐛 Kellogg Farm and Safety Camp – two presentations
- 🐛 Doctor's Notes Series at the Oswego Senior Center
- 🐛 Fox Valley Today and 107.1 FM WSPY radio two times
- 🐛 Trinity Broadcast Network, "Joy in our Town" program
- 🐛 Advisory Board presentations

# MENTAL HEALTH SERVICES

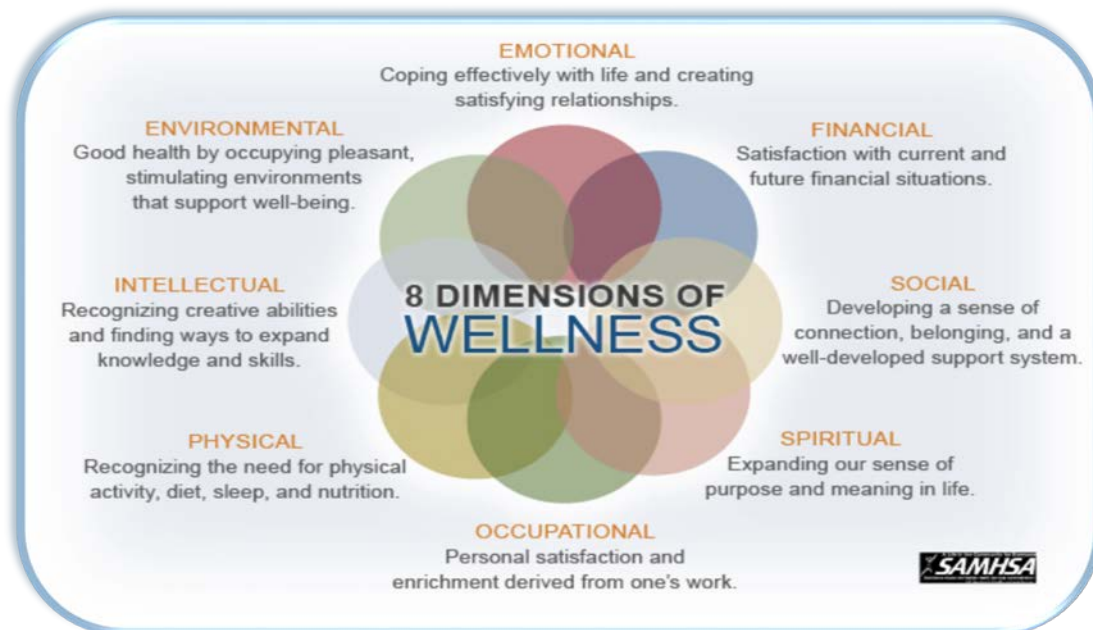
## MENTAL HEALTH TREATMENT & SUPPORT SERVICES:

Kendall County Health Department provides comprehensive and integrated mental health and substance abuse services that address the needs of youth and adults through counseling, prevention and diversion services, violence prevention, psycho-education. Clinicians understand the impact of high risk behaviors on individuals, families, and communities. Clinicians work to promote protective factors in treatment that will help facilitate meaningful change. Kendall County Mental Health Services Team has established strong working relationships and collaborations with Kendall County residents and stakeholders. As a result, there is a high level of trust and collaboration that occurs in the community to respond to mental health/substance abuse treatment and education/training needs.

3,350 Counseling Sessions were provided during 2016

78% of clients reported and showed progress towards identified treatment goals

2016 CLINICAL & SUPPORT SERVICES – PERSONS SERVED	
Outpatient Treatment (Includes Substance Abuse Services)	1,245
Transitions Elder Care	270
Crisis/Suicide Intervention	30





## CRIMINAL JUSTICE SERVICES:

Mental Health Services provides specialized services designed to promote health and wellbeing to those individuals who are involved with the criminal justice system and are experiencing mental health and/or substance abuse related problems. Services are provided at the Kendall County Health Department in collaboration with county, state, and federal probation services or at the Kendall County Jail. The intent is to maximize the individual's ability to function in the community, prevent relapse, prevent violence, promote success and reduce recidivism.



### PREVENTION & DIVERSION:

Mental Health Services seeks to proactively address those risk factors that could lead to poor mental health, substance abuse, and violence. Through psycho-education and meaningful community engagement, efforts are made to promote protective factors emotional self-regulation, mental health resilience, healthy social connectedness, and refrain from criminal thinking/behavior.

- ✓ Youth Substance Abuse Education.
- ✓ Parent Education for youth involved with the legal system
- ✓ Drug testing for federal probationers.
- ✓ Critical incident stress debriefing for first responders
- ✓ Psycho-education groups to male and female inmates at the Kendall County Jail.
- ✓ Community education presentation and events
- ✓ Crisis and Suicide interventions

### TREATMENT:

Mental Health Services provides effective client-centered treatment and substance abuse services to youth and adults who are involved with the county, state, and federal legal systems.

- ✓ Level I Outpatient Substance Abuse Treatment.
- ✓ Level II Intensive Outpatient Substance Abuse Treatment.
- ✓ Aftercare treatment and support.
- ✓ Individual substance abuse treatment to male and female inmates at the Kendall County Jail.
- ✓ Fitness restoration counseling.



Recovery

In 2016, Mental Health Services provided the following criminal justice services:

- ✓ 177 individual substance abuse treatment sessions at Kendall County Jail.
- ✓ Five sessions of youth substance abuse education, in collaboration with Kendall County Court Services, serving 56 individuals.
- ✓ Three sessions of parent education, in collaboration with Kendall County Court Services, serving eleven individuals.
- ✓ 25 psycho-education groups at Kendall County Jail serving approximately 60 individuals.

## TEN ESSENTIAL SERVICES

All Local Health Departments, as governmental entities, derive their authority and responsibility from the state and local laws that govern them. Accordingly, all Local Health Departments exist for the common good and are responsible for demonstrating strong leadership in the promotion of social, economic and environmental conditions that improve health and well-being and prevent illness, disease and injury. However, in the absence of specific consistent standards regarding how Local Health Departments fulfill this responsibility; the degree to which the public's health is protected and improved varies widely from community to community.

- ✓ Monitor health status to identify community health problems.
- ✓ Diagnose and investigate identified health problems and health hazards in the community.
- ✓ Inform, educate, and empower people about health issues.
- ✓ Mobilize community partnerships to identify and solve health problems.
- ✓ Develop policies and plans that support individual and community health efforts.
- ✓ Enforce laws and regulations that protect and ensure safety.
- ✓ Link people to needed personal health services and ensure the provision of health care when otherwise unavailable.
- ✓ Ensure a competent public health and personal health care workforce.
- ✓ Assess effectiveness, accessibility and quality of personal and population-based health services.
- ✓ Research for new insights and innovative solutions to health problems.

### KENDALL COUNTY HEALTH DEPARTMENT IS A MEMBER OF THE FOLLOWING PROFESSIONAL ORGANIZATIONS

✓ ACHMAI (Association of Community Mental Health Authorities of Illinois)	\$500
✓ CAP (Community Action Partnership)	\$625
✓ Community Behavioral Healthcare Association	\$810
✓ Companeros en Salud	\$50
✓ Grundy County Interagency Council	\$10
✓ IAPHA (Illinois Association of Public Health Administrators)	\$700
✓ ICAA (Illinois Community Action Agencies)	\$1,500
✓ ICAF (Illinois Community Action Foundation)	\$100
✓ ILCSWMA (Illinois Counties Solid Waste Management Association)	\$100
✓ IPHA (Illinois Public Health Association)	\$1,000
✓ Illinois Ventures for Community Action	\$100
✓ NACCHO (National Association of County & City Health Officials)	\$760
✓ NIPHC (Northern Illinois Public Health Consortium)	\$2,000
✓ Product Stewardship Initiative	\$1,000
✓ Kendall County Police Chief Association	\$100
✓ Illinois Council on Tuberculosis	\$80









# KENDALL COUNTY

## HEALTH DEPARTMENT

811 West John Street  
Yorkville, IL 60560  
Phone (630) 553-9100  
Fax (630) 553-9506  
[www.kendallhealth.org](http://www.kendallhealth.org)



**Public Health**  
Prevent. Promote. Protect.



Find us on:  
**facebook**



@kendallhealth